



Caratti, De Liso, Refay |



Spring 2023



Featuring artists analysis on Spotify

Social Media Analytics



Mercury is small
Mercury





Table of contents

01

Data

02

Analytics &
Visualization



Mercury is small
Mercury





Data

| Analytics & Visualization



01

Data



Mercury is small
Mercury





Data

| Analytics & Visualization



Spotify Artist Feature Collaboration Network

- [Link](#)
- Nodes = 135k musicians
- Edges = 300k collaborations

kaggle



Mercury is small
Mercury





Node attributes

spotify_id

id of the artist on spotify



name

artist name

followers

number of followers



popularity

artist popularity

genres

list of genres



chart_hits

list with number of Spotify chart hits in different countries





Data

| Analytics & Visualization



The screenshot shows a web browser window with the URL `kaggle.com/datasets/jfreyberg/spotify-artist-feature-colla...`. The page title is "Spotify Artist Feature Collaboration Network". It features a search bar, a "Data Card" tab, and a "Code (1)" tab. The "About Dataset" section describes the data as containing artist information for ~20k artists whose songs made it to the Spotify weekly charts, along with ~136k additional artists who had at least one feature with at least one of the chart artists. It also mentions that further information on feature occurrences is included, resulting in a network with 135k+ musicians as nodes and 300k+ collaboration edges. The "Usability" score is 9.71, and the license is Attribution 4.0 International (CC BY-NC-ND 4.0). The expected update frequency is "Never".

9.71

Very good usability score



Mercury is small
Mercury





```
nodes[nodes['name'] == 'Michael Jackson']
```

✓ 0.0s Python

spotify_id	name	followers	popularity	genres	chart_hits
4735	3fMbdgg4jU18AjLCKBhRSm Michael Jackson	24070351.0	81	['pop', 'r&b', 'soul']	['us (2)', 'gb (4)', 'ar (1)', 'au (3)', 'at (...)

```
edges[(edges['id_0'] == '3fMbdgg4jU18AjLCKBhRSm') | (edges['id_1'] == '3fMbdgg4jU18AjLCKBhRSm')]
```

✓ 0.0s Python

	id_0	id_1
5265	3fMbdgg4jU18AjLCKBhRSm	3r17AfJCCUqC9Lf0OAc73G
9582	085pc2PYOI8bGKJOPNjekA	3fMbdgg4jU18AjLCKBhRSm
17272	3fMbdgg4jU18AjLCKBhRSm	7ceUfdWq2t5nbatS6oIIHh
21545	31TPCRtHm23RisEBtV3X7	3fMbdgg4jU18AjLCKBhRSm
23233	3fMbdgg4jU18AjLCKBhRSm	77AfFEVeAVj2ORpC85QVJs
27874	0jJszR81GjA87jeRq0Jgwz	3fMbdgg4jU18AjLCKBhRSm
30990	3fMbdgg4jU18AjLCKBhRSm	7guDjrEFX3qb6FEbdPA5qj
36551	3fMbdgg4jU18AjLCKBhRSm	7dc6hUwyulhrZdh80eaCEE
43848	0uUIRP8qEQGUkocwF5jFvc	3fMbdgg4jU18AjLCKBhRSm
71084	3fMbdgg4jU18AjLCKBhRSm	7EVlecngrLHfQUqFMpwkT
74413	2ATKdceAaelUkxPnJPHGkz	3fMbdgg4jU18AjLCKBhRSm
80679	1SuG5iUNABfgum7OpWYvFi	3fMbdgg4jU18AjLCKBhRSm
82423	3fMbdgg4jU18AjLCKBhRSm	4D75GcNG95ebPtNvoNVXhz
89255	0HXtkeTulrpeFWWhWgZ8jNn	3fMbdgg4jU18AjLCKBhRSm
91499	3fMbdgg4jU18AjLCKBhRSm	3hv9JF3adNsbSIQDqcpj
99127	3fMbdgg4jU18AjLCKBhRSm	4xnMDfGEmXZEEDdlITKcGuE





Data

| Analytics & Visualization |



02

Analytics & Visualization



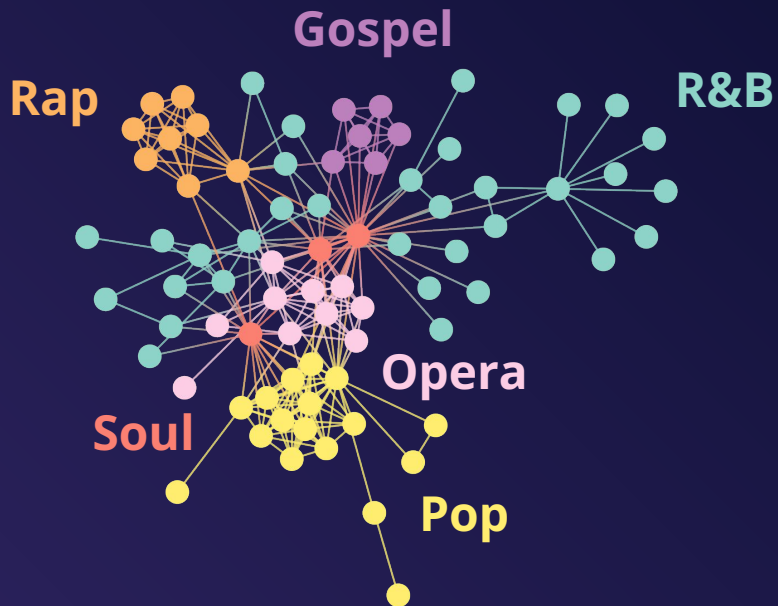
Mercury is small
Mercury





Genre collaboration

Detect different featuring communities, their main genres, and how they collaborate.

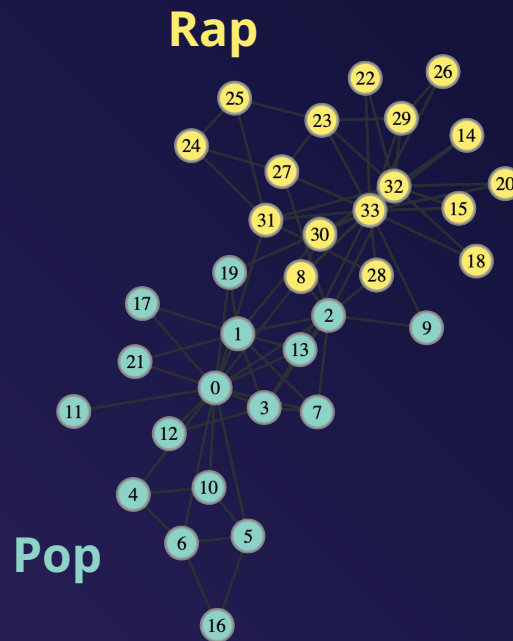




Genres-relation



The two genre-communities often collaborate



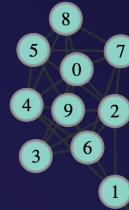


Genres-relation



The two genre-communities don't often collaborate

Opera



Rap





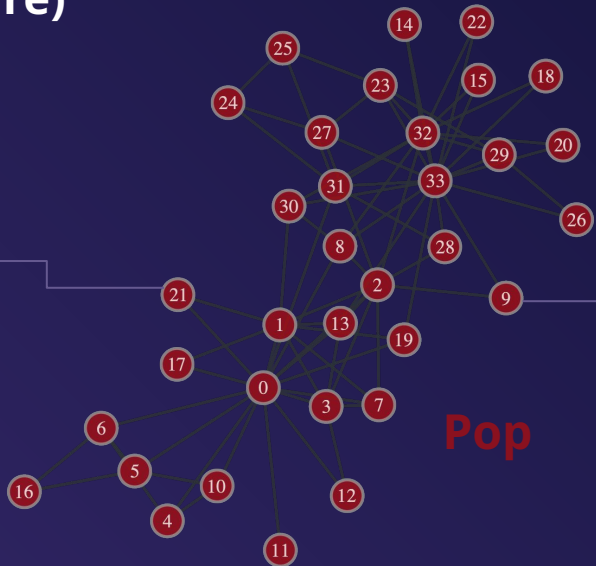
Influence

(per community-genre)



Matthew Sheeran

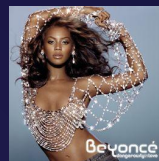
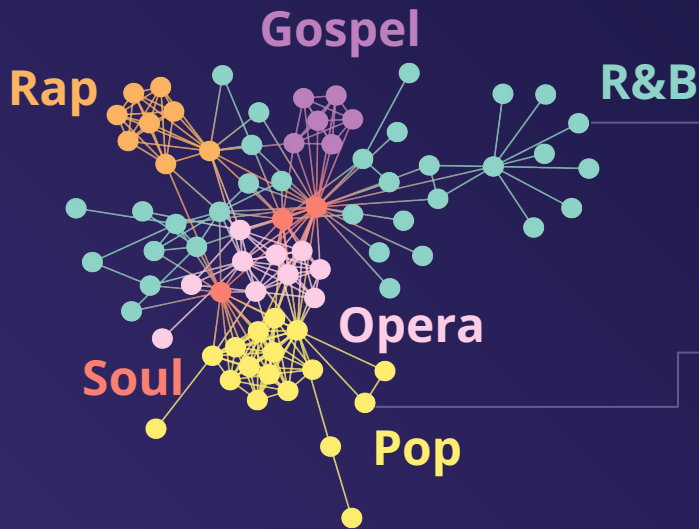
Less influential artist



Ed Sheeran

Most influential artist





Beyoncé



Ariana Grande

Similarity

Discover artists similar in the way they collaborate



Mercury is small
Mercury





Further research ideas

(if we are bored and have nothing to do...)

- Data Enrichment
- Network Exploration
- Graph Persistence (Neo4j)





Thank you!

Clap and don't ask tough questions ;-)

CREDITS: This presentation template was created by **Slidesgo**, and includes icons by **Flaticon** and infographics & images by **Freepik**



Mercury is small
Mercury

